

The Princess Flying Carpet

A U.F. Grant Creation



Astounding, Brilliant, Captivating, Dynamic, Enchanting,

Complete Secret & Detailed Drawings

*Written & Illustrated
By
Don Tanner*

**Manufactured & Released
EXCLUSIVELY By
MAK-Magic Co. Columbus, Ohio**

*Copywrite - 1977
MAK-Magic Co.*



An Arabian Nights Dream Come True

THE PRINCESS FLYING CARPET

A U. F. Grant Creation

A MAK-Magic Product

It was the creative genius of U. F. Grant which first brought the portable levitation to magicians many years ago with the great principle commonly called the SUPER-X. And then, some years later, that same creative genius made available to magicians an even greater creation called the FLYING CARPET. We didn't think that could be improved upon -- but we were wrong!

Now magicians have available to them a truly startling illusion called THE PRINCESS FLYING CARPET. Here is a levitation, a master illusion, which can literally be carried under the arm! Not only that, but it can be worked *at very close quarters*. Yes, many performers have presented this illusion in the confines of exhibit booths at trade shows. Here is the -

Effect: Visible to the audience is a small platform on wheels. They also see a rectangular 'carpet', with gold fringe, resting on and supported by a two-fold screen and two crossed swords.

The performers assistant, *or a little boy or girl from the audience*, is brought forward and they sit on the 'carpet'. Now the two-fold screen is slid off the platform and onto the floor. The 'carpet' remains suspended, with the two crossed swords the only apparent means of support. THEN THE TWO SWORDS ARE REMOVED! They can be passed back and forth under the 'carpet' to prove the absence of any support. A solid hoop can then be passed over the 'carpet' and floating spectator, further proving the absence of any support.

Now for the piece de resistance' -- as great an improvement as was the original SUPER-X principle. While apparently floating in mid-air, the 'carpet' with the person sitting on it *makes a complete 360° revolution!*

The two-fold screen is then replaced under the 'carpet', the assistant helped down off of the 'carpet' and excused. A truly beautiful illusion!

Method: Let's take a look at the items used for this great illusion. Figure 1 shows the outfit set up and ready to work. The base is made from 5/8" plywood or particle board and measures 23" wide and 18" deep. Casters are mounted near the four corners. Gold fringe (2 1/2") is secured around all four sides, as shown.

On top of the base you will see a piece of carpeting. This conceals the bolts which hold the 'C' gimmick in place, and will be discussed later.

Resting on the piece of carpet is a two-fold screen, which apparently supports the 'carpet' at the top. Now the 'carpet' which we furnish is made from 5/8" particle board 18" wide and 14" deep. It is padded and covered with black felt. Frings 6" long is attached around all four sides of the top of 'carpet'.

Visible at the front of the outfit in figure 1 are two crossed swords, each approximately 27 1/2" long. The tips of the swords are held in place by magnetic cabinet latches which are attached to the under side of the 'carpet'.

Now for some items which are not visible in figure 1. First is what we call the 'C' gimmick, illustrated in figure 8. This gimmick is made from 1 1/2" aluminum tubing with an 8" plate welded to the top and bottom, as illustrated. Each plate has four holes in it. You will also notice a hole in the top part of the 'C', and an eyelet at the top rear. The purpose of these will be discussed later.

The base is bolted to the bottom plate as shown in figure 5. The bolt heads are visible in the photo. The piece of carpet will cover these.

Figure 6 shows the underside of the top or 'carpet'. We would like to point out several things. First, the metal, ball bearing, lazy Susan type swivel plates attached at the center. It is the lower plate which is bolted to the top plate of the 'C' gimmick. Figure 7 shows the 'carpet' bolted in place. Looking again at figure 6, you will see the magnetic catches at the front near each side. Also, if you look closely, you will see four little 'buttons' one near each of the four corners. These 'buttons' will be used to cause the 'carpet' to rotate, and will be described later.

The two-fold screen shown in figure 1 measures 19 1/2" high and each panel is 14 1/2" wide. At the bottom of each panel, at the hinged side, a 'quarter circle' piece, 3" radius, is cut out, as shown in the photos. A piece of black felt is attached to the rear of the screen to cover these cut out sections. The reason for the cut out is so that when the screen is pulled off of the base to the rear, it can straddle the lower arm of the 'C' gimmick.

Let's consider the method of causing the 'carpet' to revolve. In the second paragraph above we referred to little 'buttons' near the four corners of the 'carpet'. Look at figure 9. Remember that the 'buttons' are on the underside of the 'carpet'. One end of a piece of fish line is attached to the left rear (LR) button. The cord then passes to the right and goes around the right rear button, then to the front and around the right front button, to the left and around the left front button, then back to the rear and around the left rear button. From here it takes a diagonal path through the eyelet at the top rear of the 'C' gimmick. The end of the line is then tied to a metal washer. Now if you were to pull on the line, the 'carpet' will make a complete revolution, thanks to its built in, ball bearing, lazy Susan! But we don't

want it to move until the right time -- so we must have a method of keeping it stationary until we're ready for it to revolve. When we described the 'C' gimmick, we mentioned a hole in the top arm of the 'C', see figure 8. There is a corresponding hole in the 'carpet' near the rear, center. Thus, an 'L' shaped pin can be inserted down through the carpet and into the 'C' gimmick. This will keep the top or 'carpet' from turning.

Now let's go over the presentation. The outfit appears as in figure 1 when your assistant or a boy or girl from the audience is placed on the 'carpet'. (The outfit will support up to 140 pounds.) The person sits a little to the rear and then crosses their legs on the front of the 'carpet'.

Now the screen is pulled off of the base and onto the floor at the rear, figure 2. It rests on the floor and is right up against the gimmick. The screen can be partially closed at this point. The 'carpet' is now supported, apparently, by only the two crossed swords near the front.

The two swords are then removed and the 'carpet' now appears to be floating in mid air, figure 3. Figure 4 gives another view of the 'carpet' apparently floating. The swords can be passed back and forth under the 'carpet' to prove the absence of any support.

At this point a large hoop can be passes over the 'carpet' and floating spectator. Figure 10 shows the moves for this. Standing behind the outfit, hold the hoop at the right. Move it a little to the left and then swing the front part of the hoop clear around to the left, so that it is now in the position shown in the center sketch in figure 10. Move the hoop a little to the right and then swing the right side of the hoop to the front and then off to the left, as shown in the third sketch. To the spectators, you have apparently passed the hoop over the 'carpet' twice.

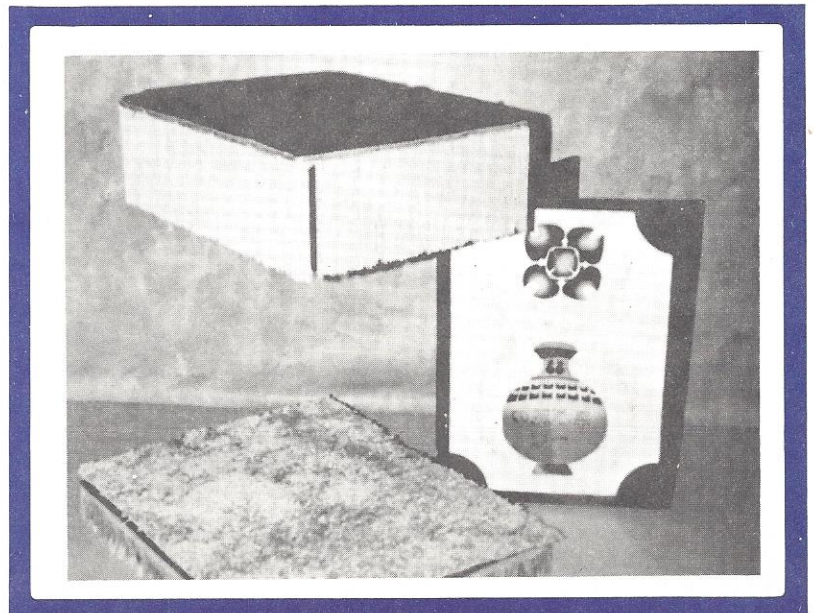
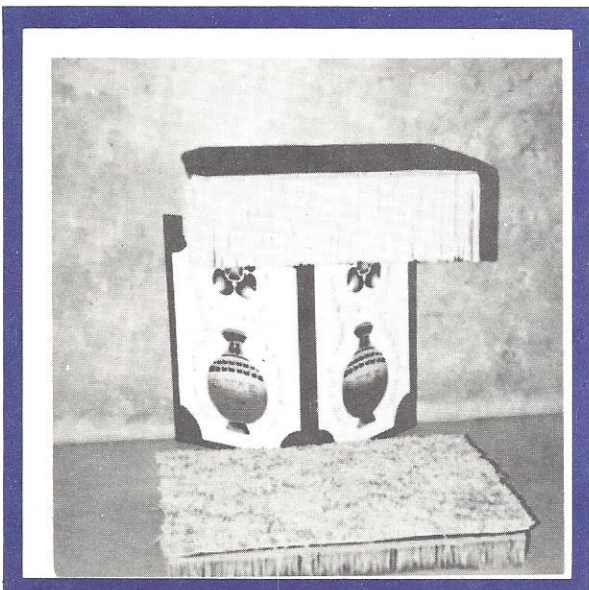
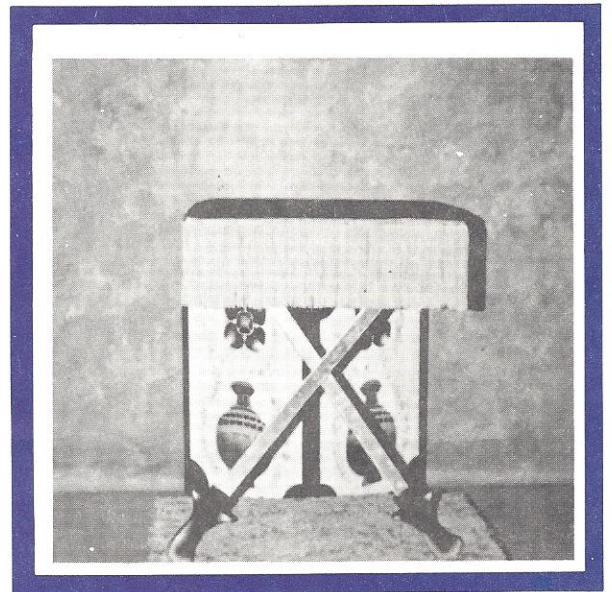
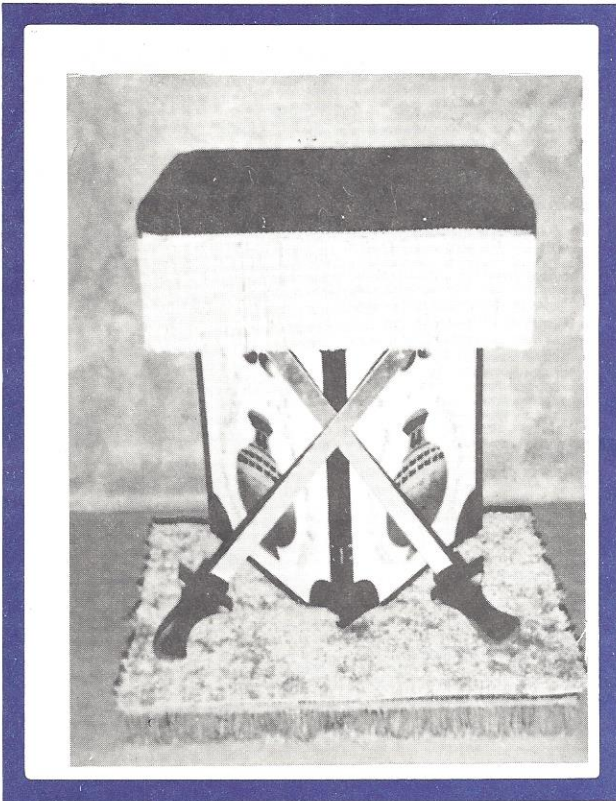
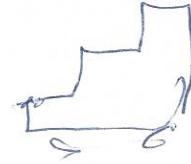
Now, as the left hand moves the hoop away from the 'carpet' and to the left, the right hand secretly removes the 'L' shaped pin from the rear of the 'carpet', and then grasps the washer to which the fish line is attached. A *very slow* pull on the line will cause the 'carpet' to very mysteriously make a complete revolution. If circumstances permit, the line could run off stage to an assistant who does the pulling. This would permit the performer to stand away from the outfit as the 'carpet' revolves.

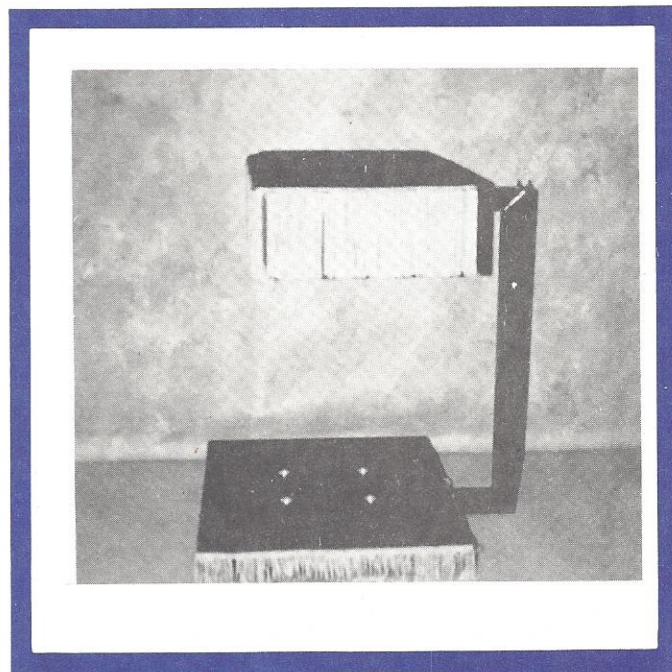
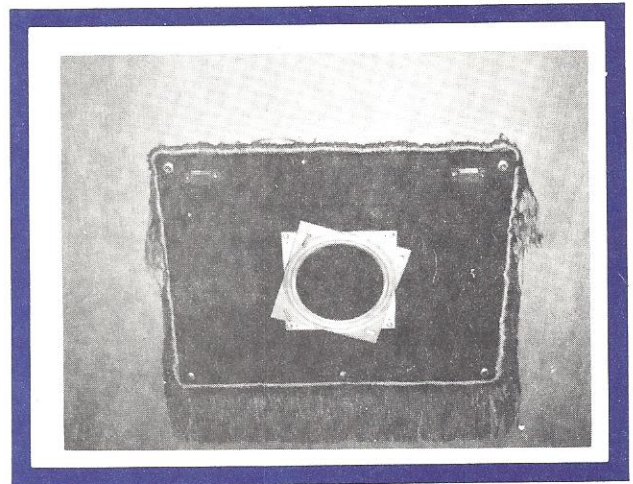
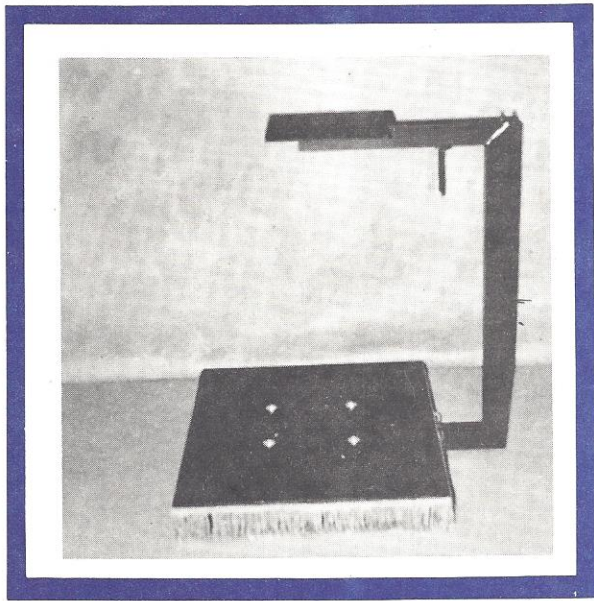
After the 'carpet' has revolved, your hands reach out very slowly and softly to steady the 'carpet', and at the same time the 'L' pin is reinserted to hold the 'carpet' in place.

The two fold screen is then slowly placed back under the 'carpet' and, if desired, the swords are replaced. The assistant is helped from the 'carpet' and excused. (A small stool will make it much easier for the assistant to get onto and off of the 'carpet'.

The outfits supplied by MAK-MAGIC have eight holes drilled in the base. Using one set of holes, the gimmick extends straight to the rear. Using the other set of holes, the gimmick extends at an angle to the right rear. This is for the Jack Gwynne variation. The screen is apparently pulled off to the side, actually to the right rear and against the gimmick. When using this method, the outfit should be set up turned slightly to the right, so the gimmick cannot be seen.

Text & Illustrations by Don Tanner





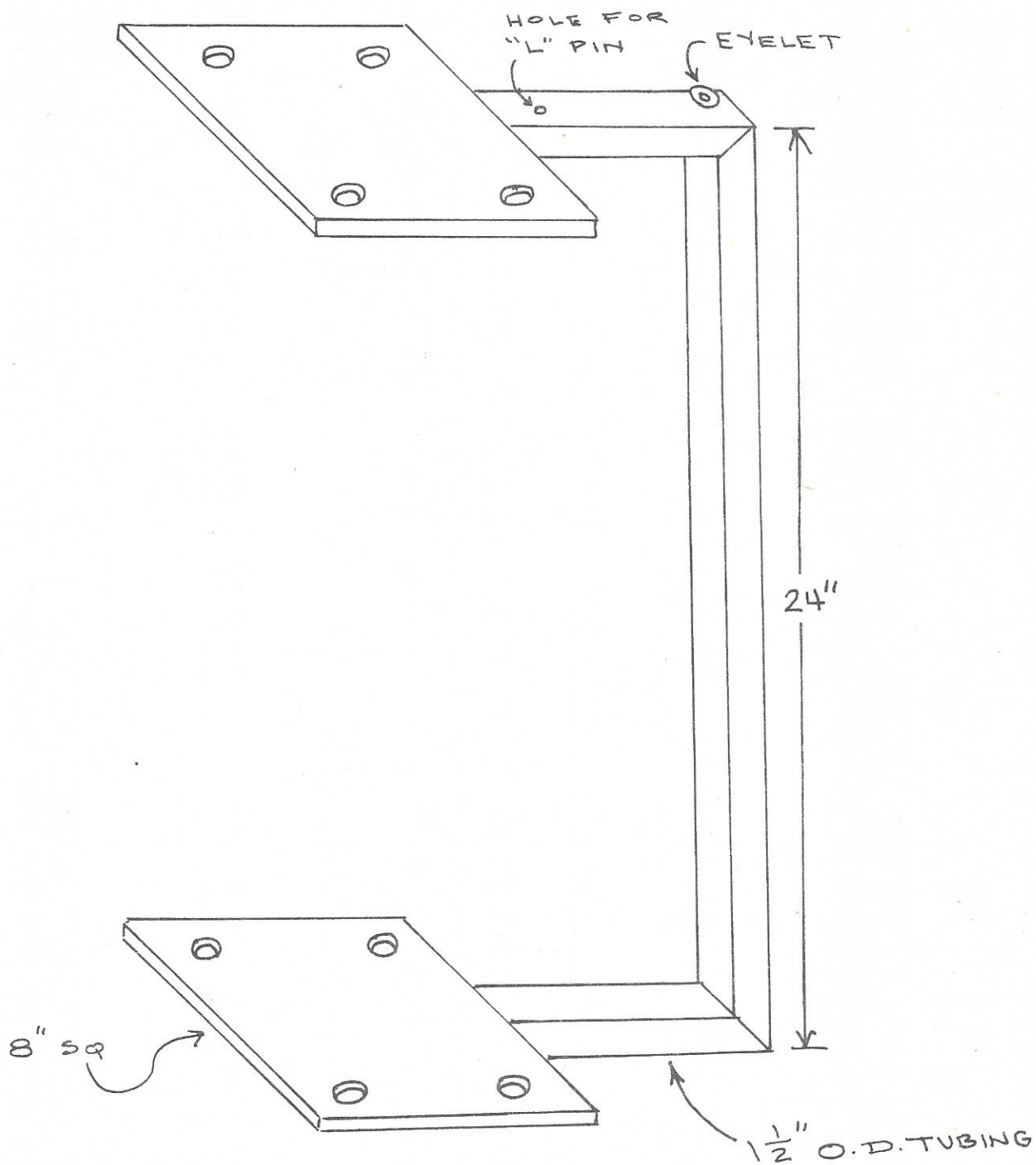
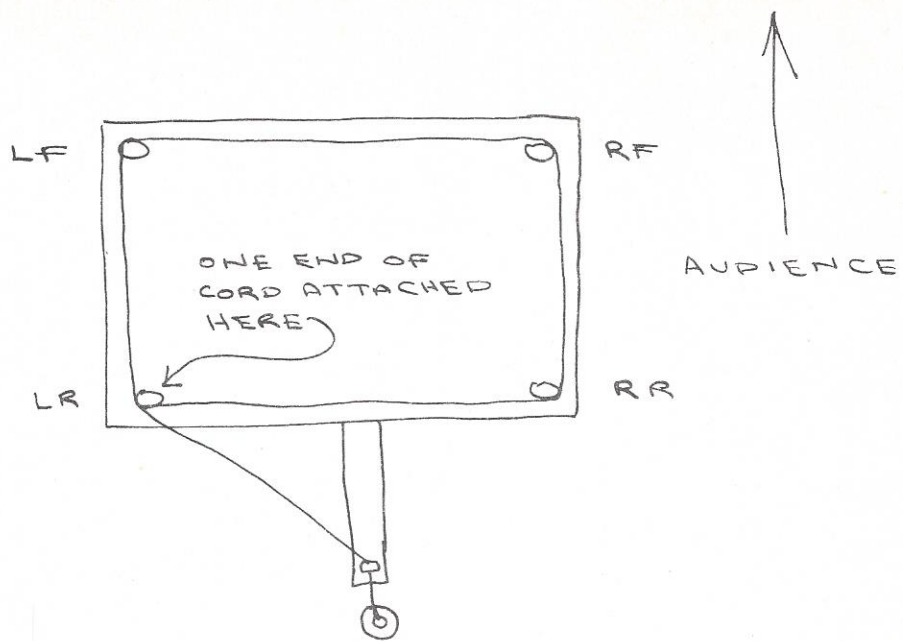


FIG. 8



TOP VIEW

FIG. 9

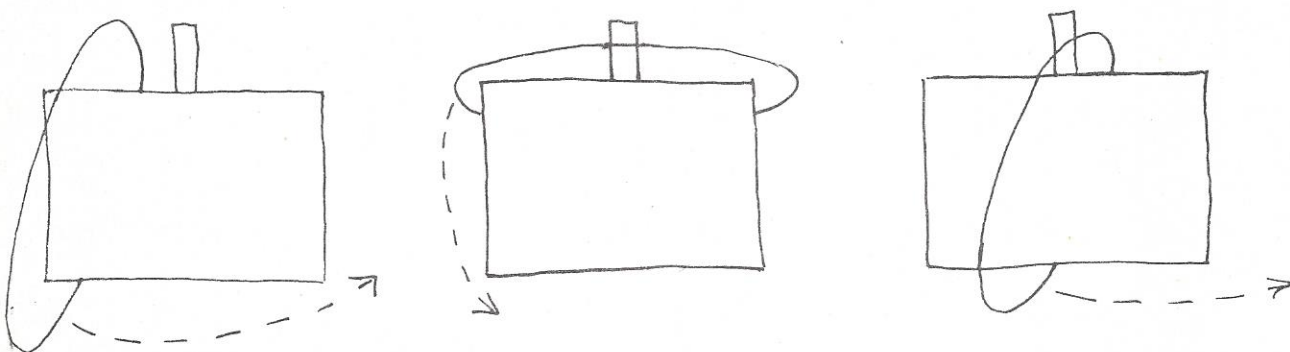


FIG. 10